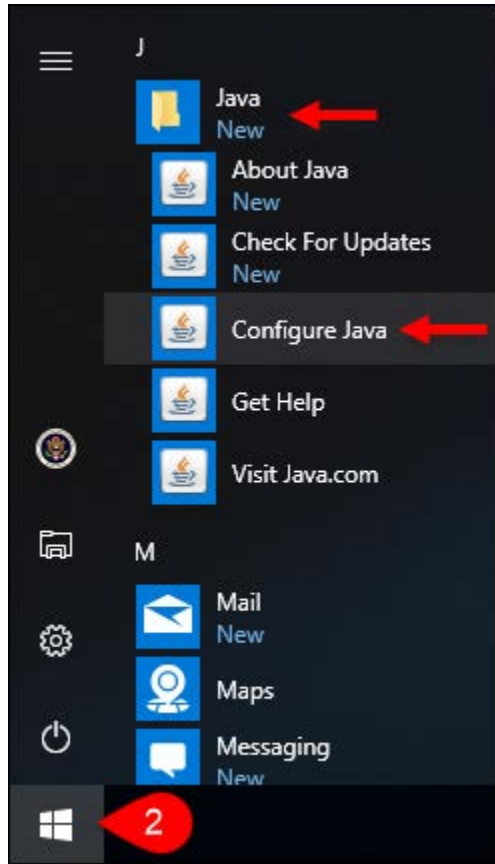


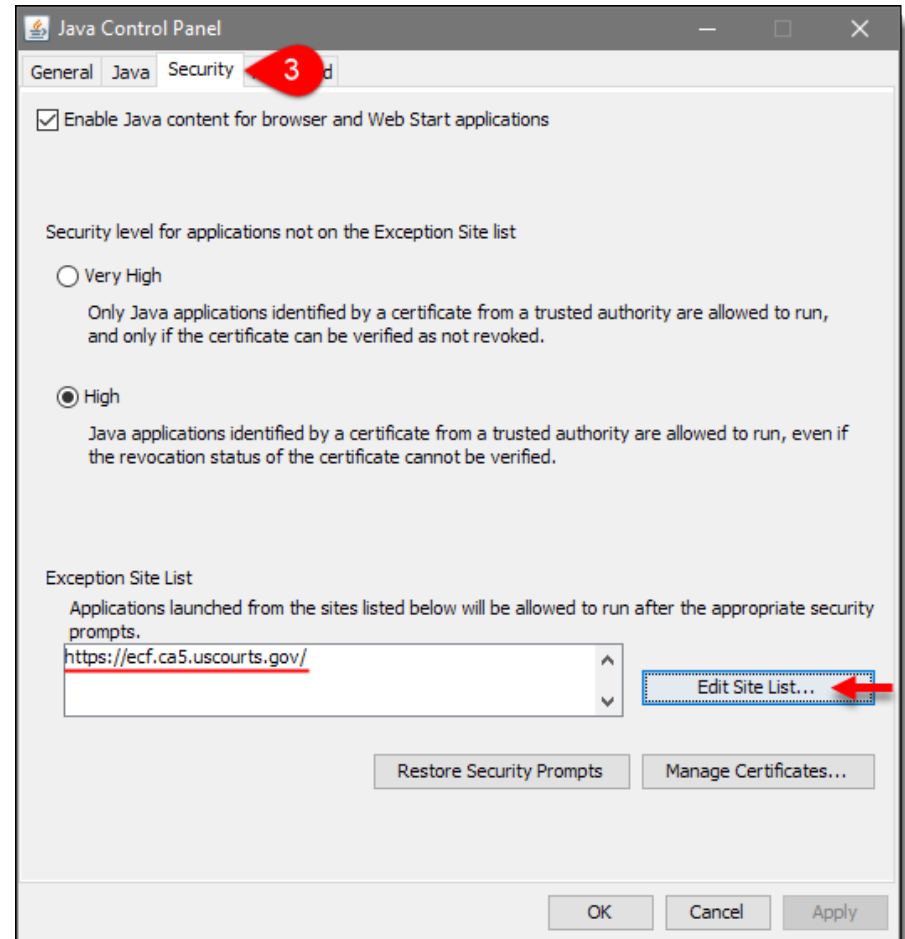
Windows 10 – Microsoft Edge with Java Web Start

Java Setup

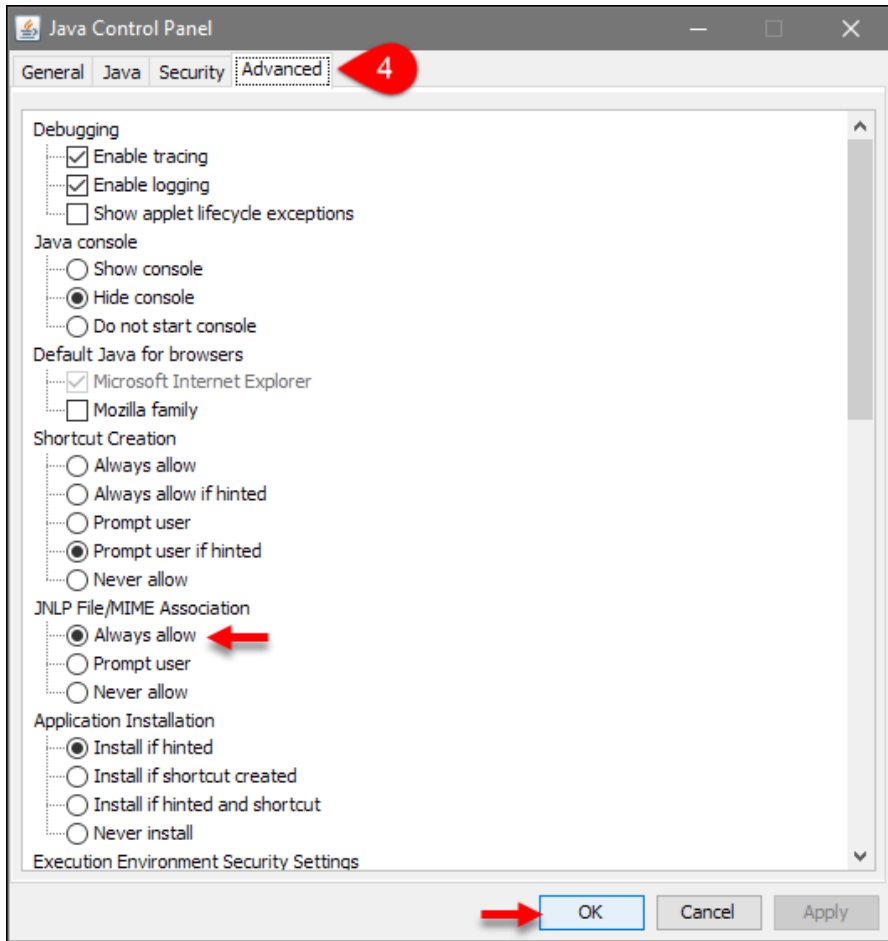
1. Install the latest version of Java. <https://java.com/en/>
2. From the 'Windows Start' menu, navigate to the 'Java' folder and select 'Configure Java'.



3. Select the 'Security tab', click the [Edit Site List] button, and add <https://ecf.ca5.uscourts.gov/> to the Exception Site List.



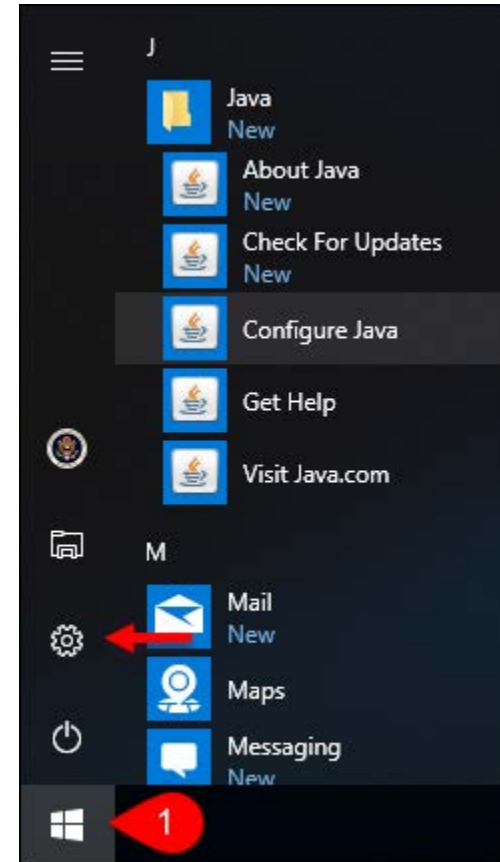
4. Select the 'Advanced' tab, click the 'Always allow' radio button under JNLP File/MIME Association, and click [OK].



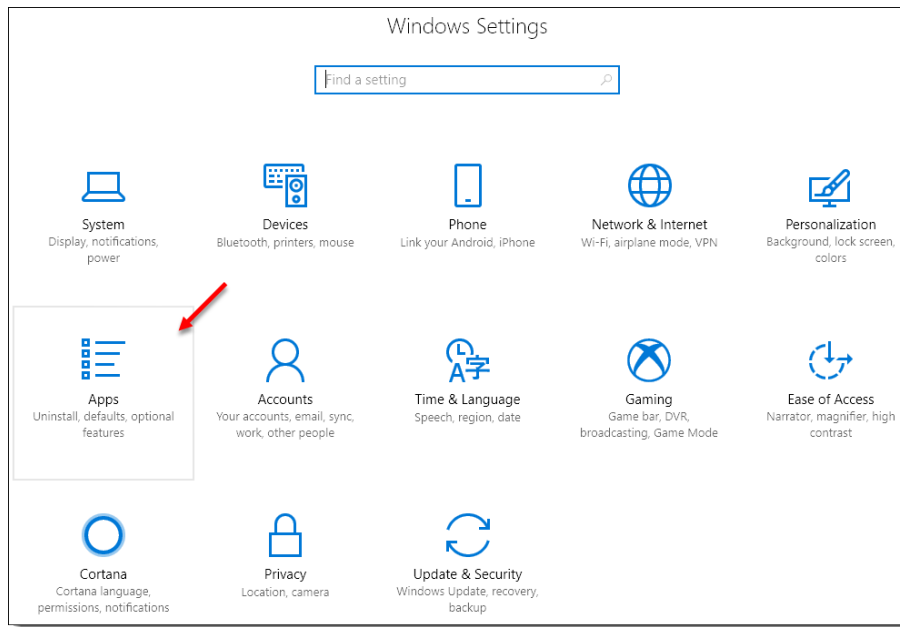
5. Proceed to the Windows Setup section.

Windows Setup

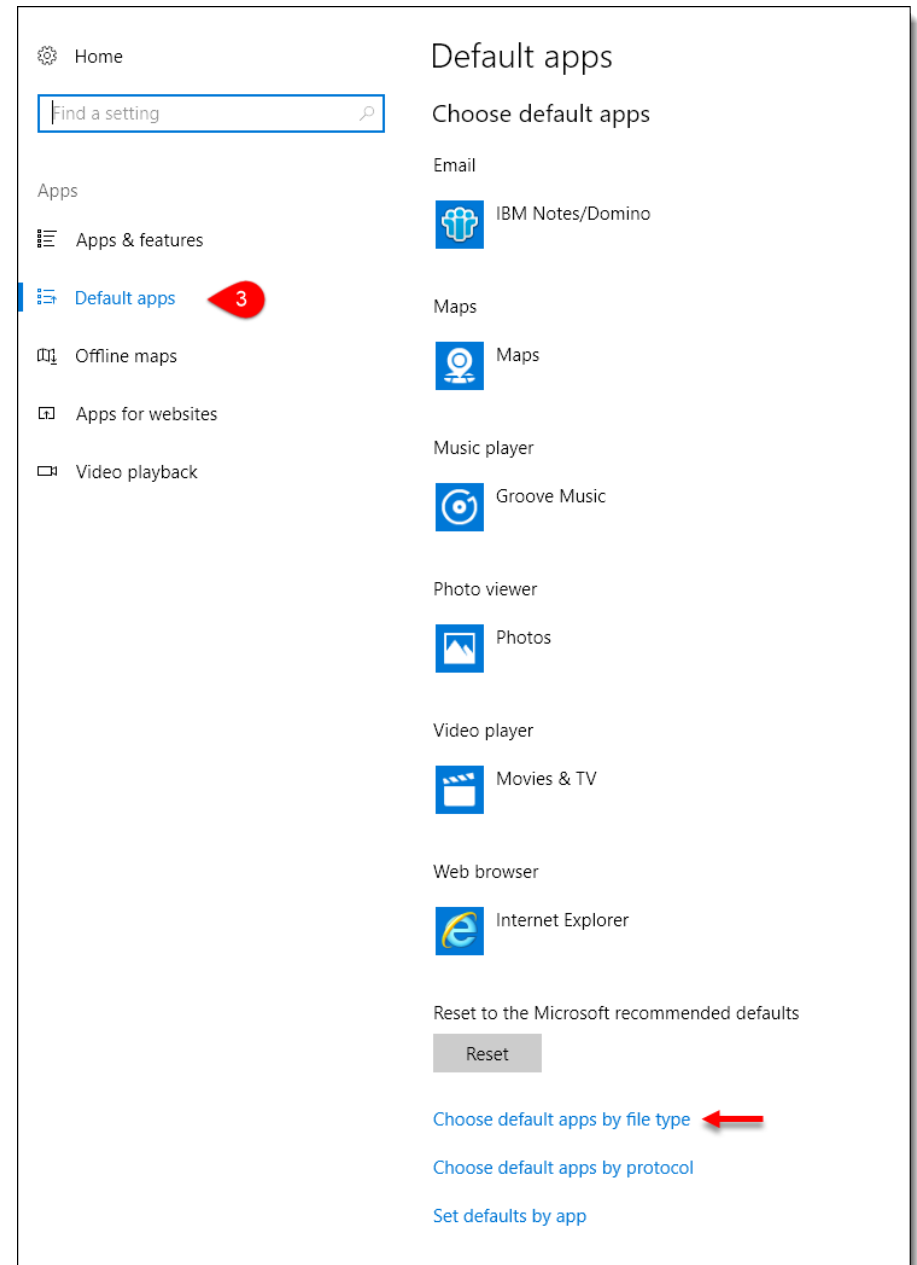
1. From the 'Windows Start' menu, select 'Settings'.



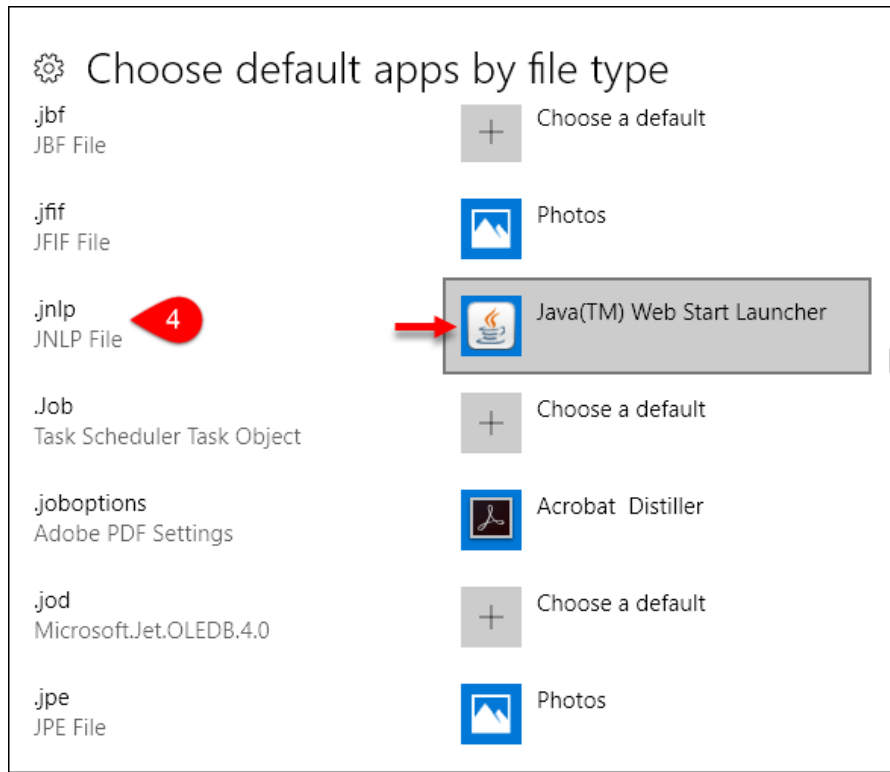
2. Under Windows Settings, select 'Apps'.



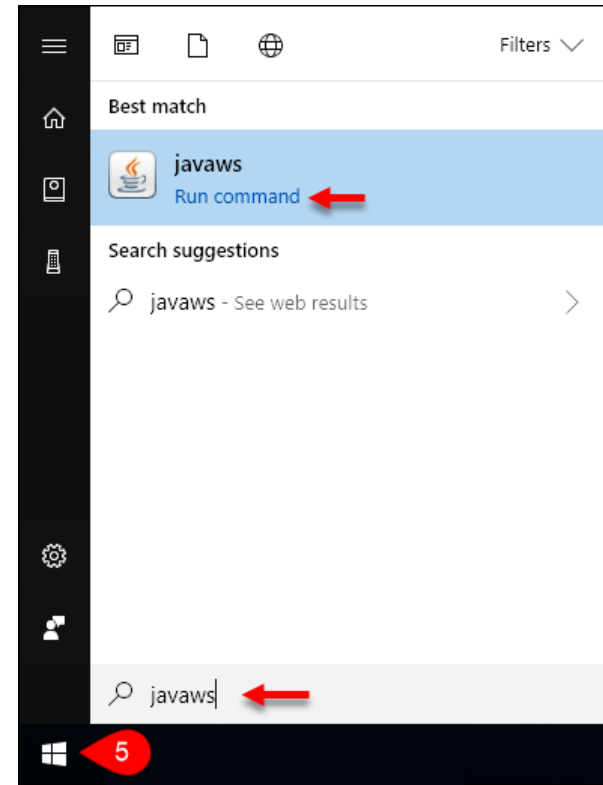
3. Select the 'Default apps' category, then select the 'Choose default apps by file type' link.



4. Scroll down to the '.jnlp' file type and select 'Java Web Start Launcher' as the default app. If Java Web Start is not an option, proceed to Step 5. Otherwise, close Windows Settings and proceed to Step 6.



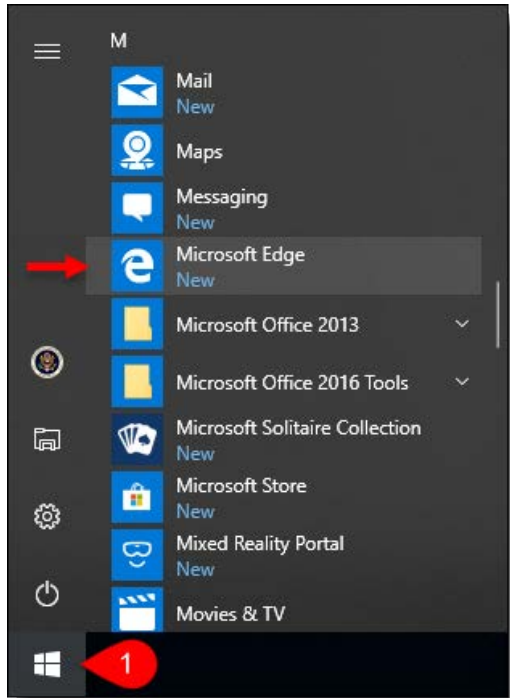
5. From the 'Windows Start' menu, type 'javaws' and click 'Run command'. This will show Java Web Start Launcher as a selectable app for Step 4.



6. Proceed to the Microsoft Edge Setup section.

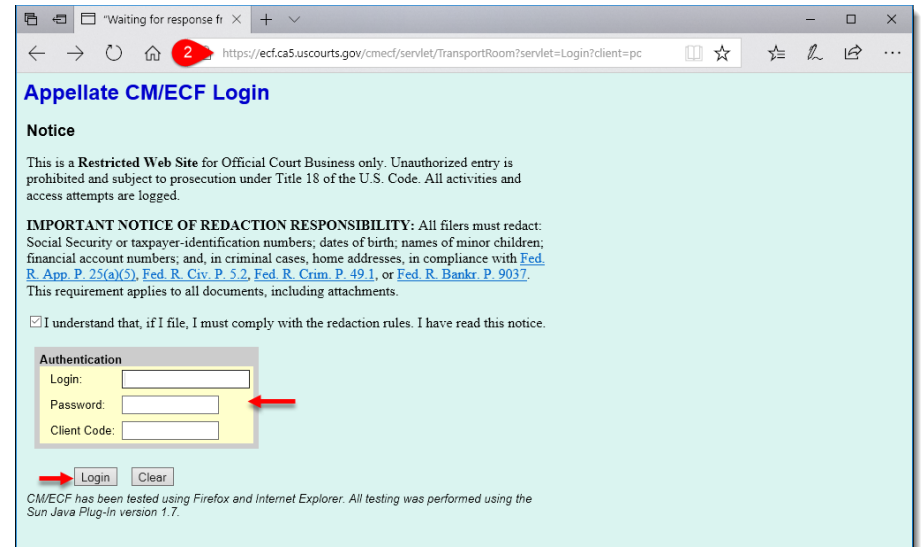
Microsoft Edge Setup

1. Open the Microsoft Edge browser.



2. If Edge is set as the default browser, click the link below, otherwise copy and paste in the address bar:
<https://ecf.ca5.uscourts.gov/cmecf/servlet/TransportRoom?servlet=Login?client=pc>

Enter CM/ECF credentials, and click [Login].



3. The .jnlp file for Java Webstart will download automatically. Select [Open] to run CM/ECF.

