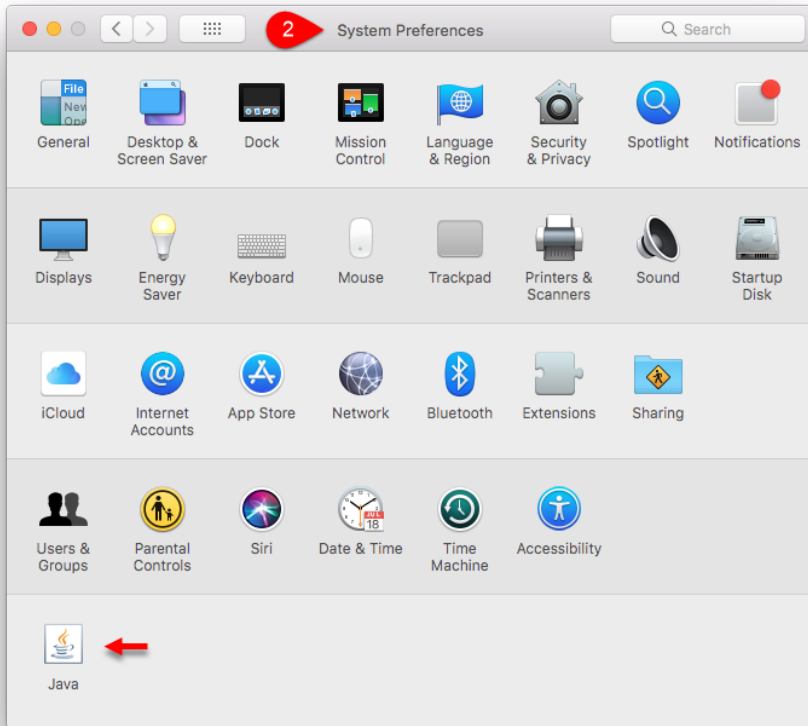


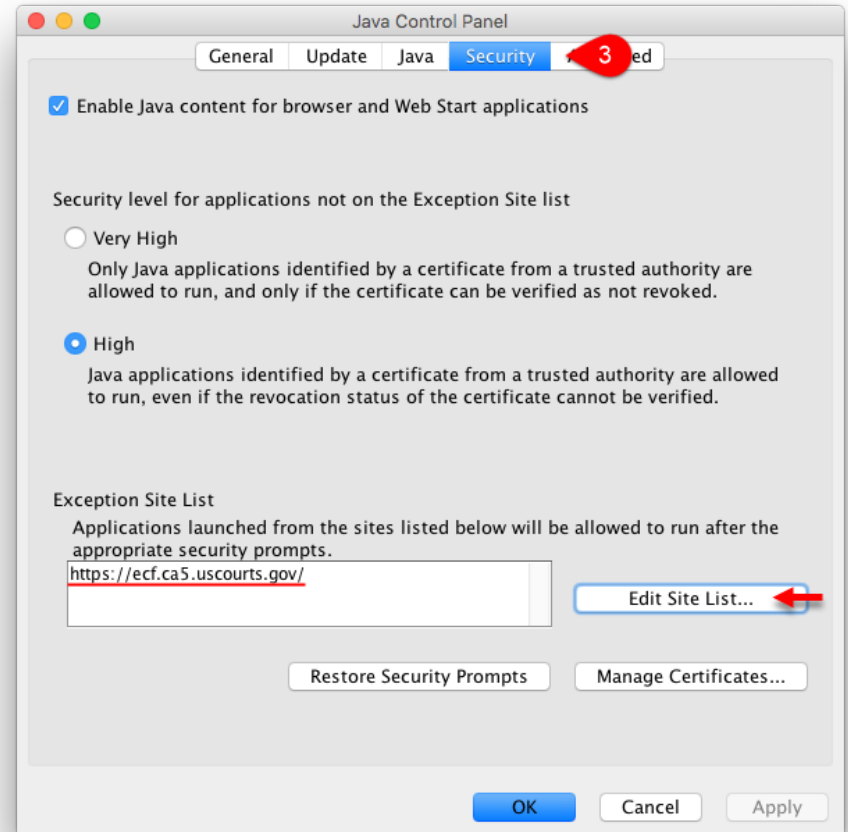
Mac OS - Safari

Java Setup

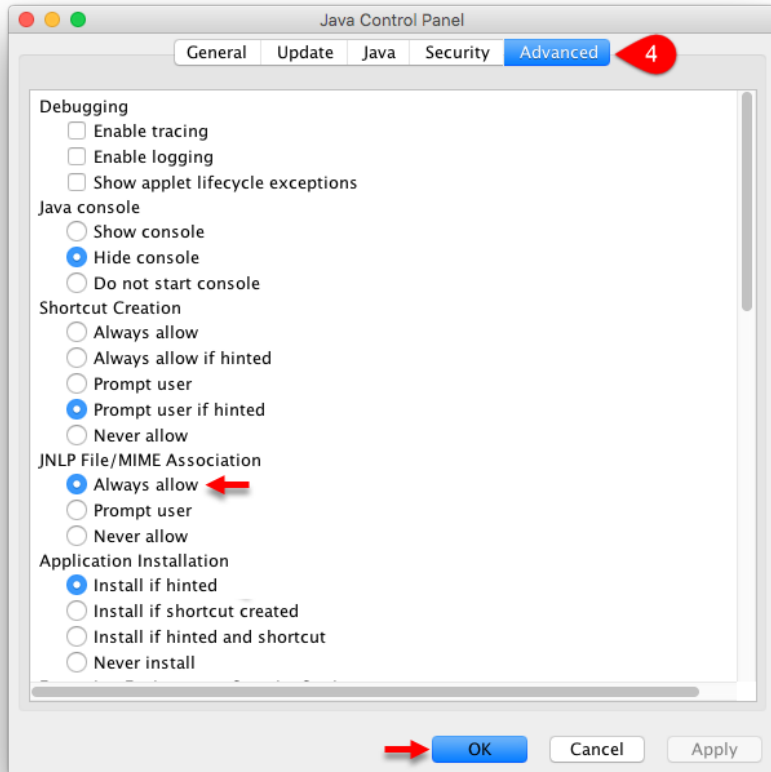
1. Install the latest version of Java. <https://java.com/en/>
2. Open Mac System Preferences and select 'Java'.



3. Select the 'Security tab', click the [Edit Site List] button, and add <https://ecf.ca5.uscourts.gov/> to the Exception Site List.



4. Select the 'Advanced' tab, click the 'Always allow' radio button under JNLP File/MIME Association, and click [OK].

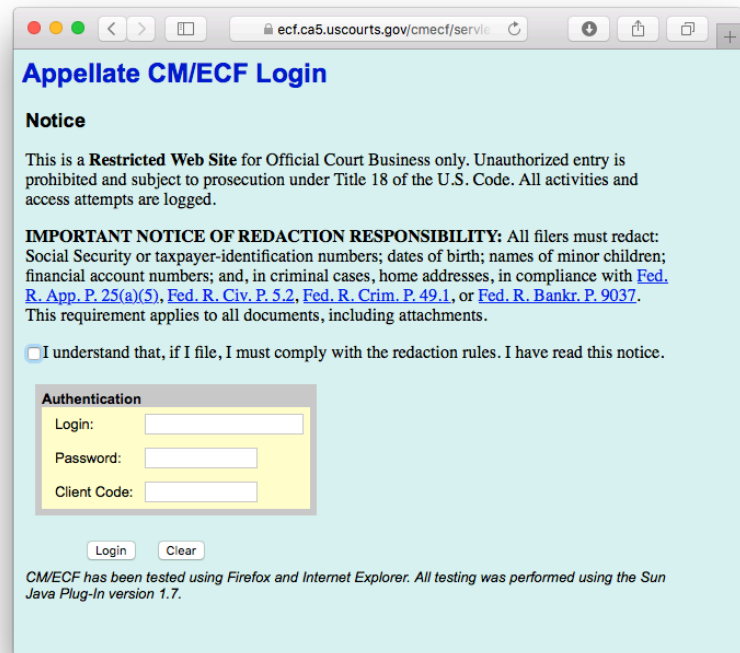


5. Proceed to the Safari Setup section.

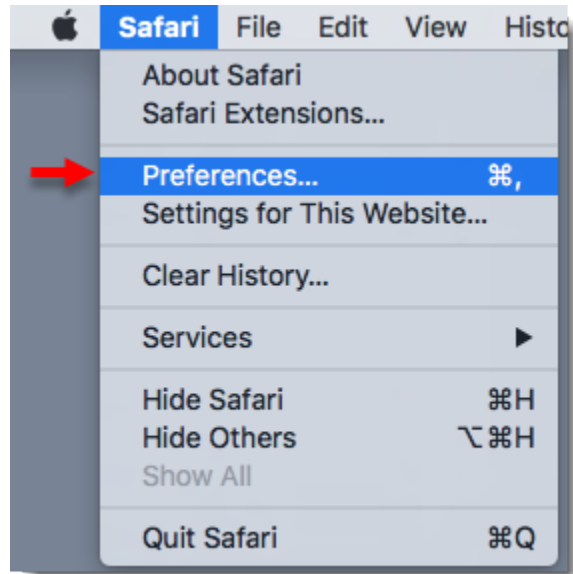
Safari Setup

1. Open the Safari browser and navigate to the CM/ECF login page without logging in.

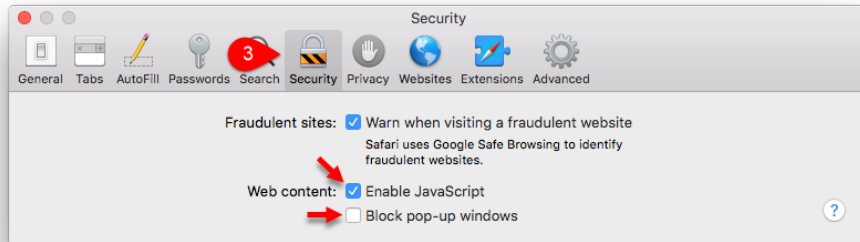
<https://ecf.ca5.uscourts.gov/cmecf/servlet/TransportRoom?servlet=Login>



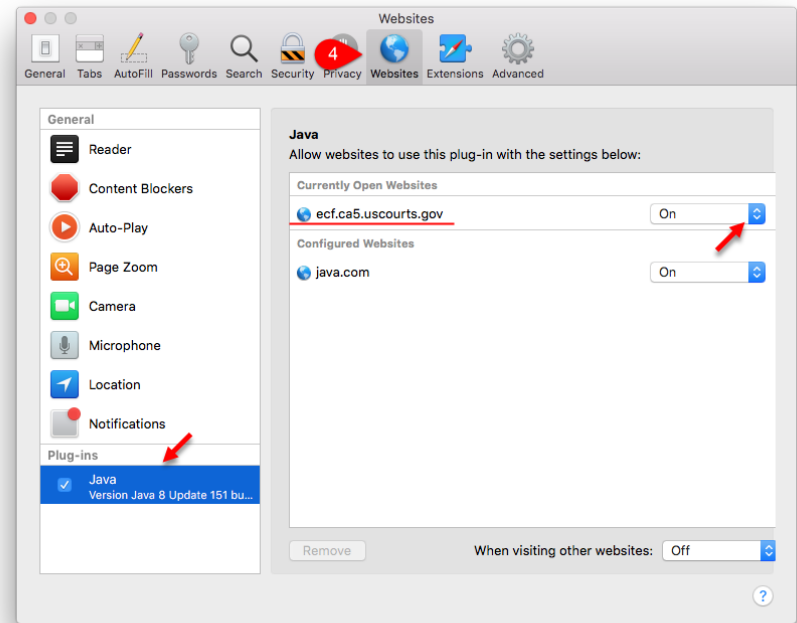
2. In the 'Safari' menu, select 'Preferences'.



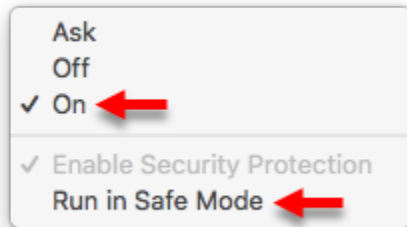
3. Under the 'Security' category, check the 'Enable JavaScript' box and uncheck the 'Block pop-up windows' box.



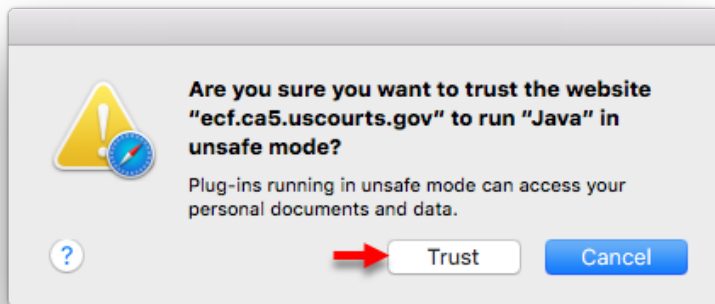
4. Under the 'Websites' category, select the 'Java Plug-in'. Locate the uscourts.gov website and while holding the 'Option' key (Mac Keyboards) or 'Control' key (Non Mac Keyboards), click the dropdown menu. ***NOTE*** Some users may need to hold the 'Control' and 'Alt' key simultaneously to access the menu in Step 5.



5. Click 'On' to select the check mark and click 'Run in Safe Mode' to deselect the check mark. ***NOTE*** Deselecting Safe Mode is only for the CM/ECF website and will not change the default setting for other websites using the Java Plug-in.



6. Click [Trust] to allow Safari the ability to upload documents in CM/ECF. Close Safari Preferences.



7. Enter login credentials to access CM/ECF.

