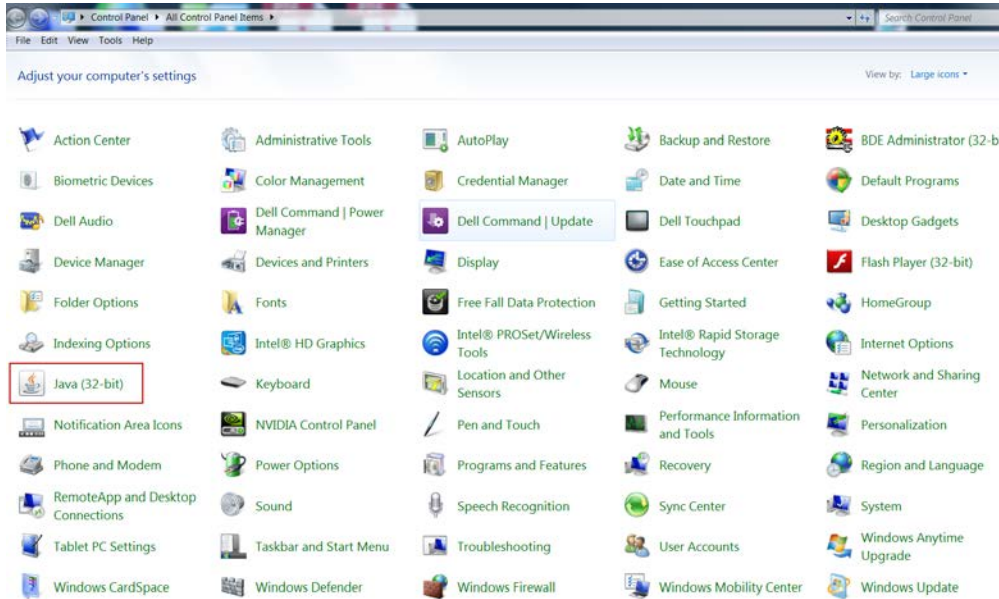
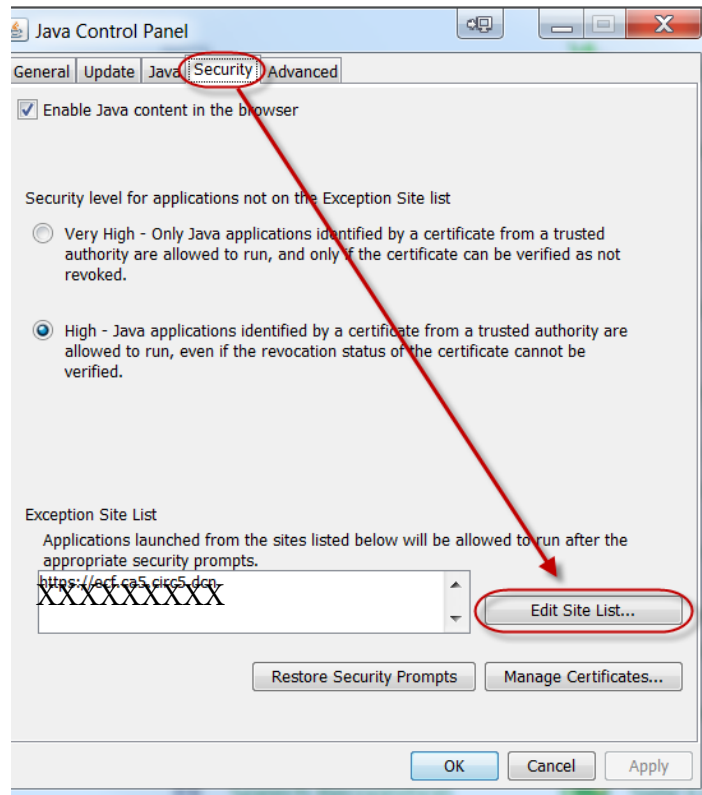


Getting a JAVA security when you try to log into CM/ECF?
Please follow the instruction below to fix it.

Close Internet Explorer
Press Start - Control Panel - Go to Java



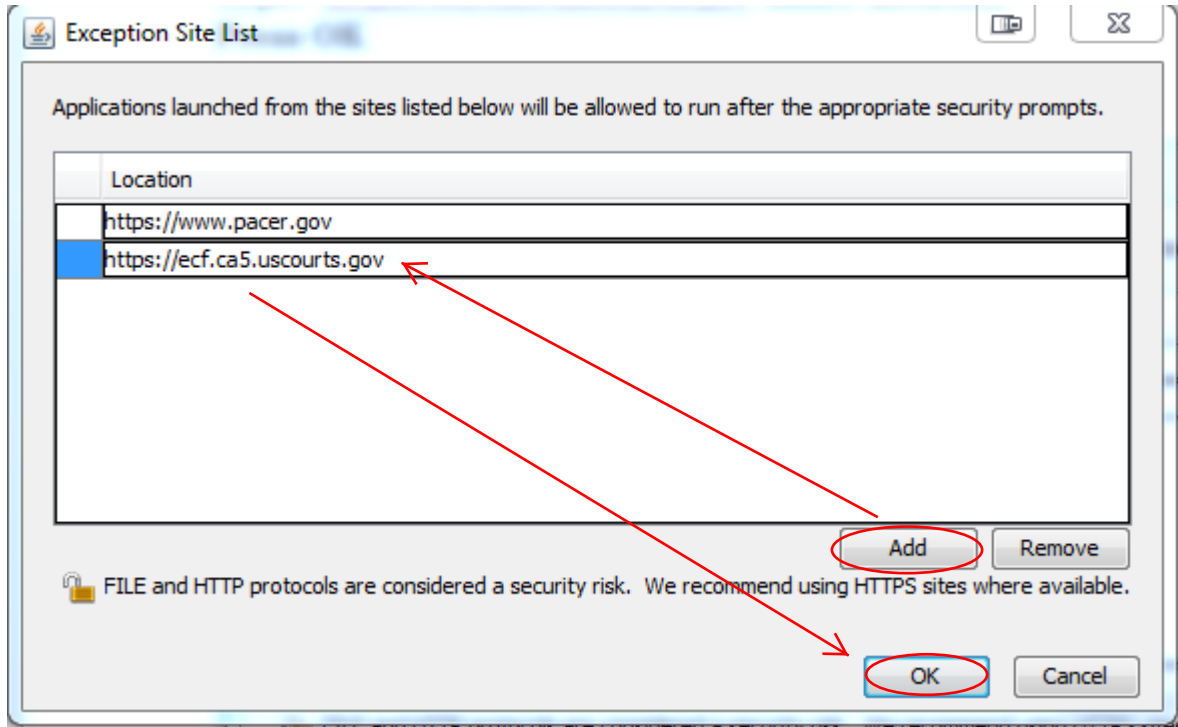
Go to the JAVA Security Tab in the Java Control Panel
Press Edit Site List



Press Add

Type: <https://ecf.ca5.uscourts.gov> under Location

Press OK



Press OK to exit the JAVA Control Panel

Open Internet Explorer and log into CM\ECF.